



*Presents the 10<sup>th</sup> Annual  
La Vuelta d'Acadiana*



***\*2017 Race Bible\****

***When: Saturday March 25<sup>th</sup> & Sunday March 26<sup>th</sup>***

***Where: Lafayette & Arnaudville, La.***

**2 Events over 2 days (Saturday Afternoon Criterium and Sunday Morning RR)**

**Event Type: Omnium Format / Operating under permit 2017-940**

**\$2,500 up for grabs; Overall Standing Payout – with a CAT 3 BONUS**

**\*PLUS \$1000 in Criterium Primes ([Acadiana Ram](#))\***

Promoter Info: Glenn J. Richard [Glenn.Richard@Halliburton.com](mailto:Glenn.Richard@Halliburton.com) 337-940-1418

# **\*Table of Contents\***

<b>Table of Contents / Number Placement</b>	<b>2</b>
<b>Race Hotels</b>	<b>3</b>
<b>Registration / Packet Pickup</b>	<b>4</b>
<b>Event Schedule</b>	<b>5</b>
<b>Criterium Details</b>	<b>6</b>
<b>Road Race Details</b>	<b>7, 8</b>
<b>Payout Schedule / Minimum Field Size Contingency</b>	<b>9</b>
<b>HOT SPOTS / Omnium Points Schedule</b>	<b>10</b>
<b>Credits</b>	<b>10</b>

## **\*Race Number Placement\***

**Criterium Left Side**

**\*Please do no fold or manipulate the numbers in any way\***

**Road Race Right Side**

**Be sure to mount your number perpendicular to your torso – so that it is level for the camera.**



# \*Official Race Hotels\*

**THE HAMPTON IS WITHIN 100 FEET OF THE FINISH LINE OF THE CRITERIUM**



**Hampton Inn & Suites Lafayette**  
**1910 South College Road / Lafayette, LA 70508**  
**337-266-5858 (\$99 group rate)**

Room Type	RATES		
	Rack Rate	Single Preferred rate	Double Preferred rate
Studio Suites	\$149.00	\$119.00	\$119.00
Standard King or Double Queen	\$139.00	\$99.00	\$99.00

**...if the Hampton should run out of rooms, here is your second choice.**



**Residence Inn – Airport by Marriott**  
**128 James Comeaux Road / Lafayette, LA 70508**  
**337-232-3341 (\$99 group rate)**

Room	Single Rate	Double Rate
Studio Suite	\$109	\$109
One Bedroom Suite	\$129	\$129
Two Bedroom Suite		

***Cancellation Policy***

If cancellation of this booking becomes necessary, to avoid forfeiture of first night room and tax for each room reserved, the hotel must have a verbal notification no later than **72 hours** prior to arrival date.

***Check In/ Check Out Times***

Check In time is 4:00pm or later. Group's that arrive prior to 4:00pm will be accommodated as soon as possible on a space available basis. Check Out time is 11:00am. Arrangements can be made for baggage storage with our front desk staff.

# **\*All About Registration / Packet Pickup\***

**\*\*Late Fees (10\$) only apply to Omnium entrants if you do not pre-register online\*\***

- I. Pre-Registration Online - Save \$10 for Omnium entrants
  - a. Online registration will be unavailable after 5pm on Thursday March 23rd, 2017.
  - b. [USACycling.com](http://USACycling.com) Racers will be responsible for the online fee that is automatically charged when checking out.
- II. Saturday Morning – Early Packet Pickup
  - a. A late fee of **\$10** will be assessed when registering Saturday Morning for Omnium entrants only.
  - b. Packet pickup will take place from 09:00 AM to 10:50 AM at The Hampton Inn and Suites Saturday – March 25<sup>th</sup>, 2017. ([1910 South College Road / Lafayette, LA 70508.](#))
- III. Saturday Afternoon before your Criterium Event
  - a. Registration will be located behind the finish line under the blue tent at the crit in front of the Hampton Inn. [1910 South College Road / Lafayette, LA 70508](#)
  - b. Registration will close 30 minutes prior to your event.
- IV. Sunday Morning before the Road Race
  - a. Registration will be located near the finish line of the road race. [map](#)
  - b. 1517 Courtableau Hwy / Arnaudville, LA 70512
  - c. **Registration for Women and Juniors will be from 6:00 to 6:30.**
  - d. **Registration will close for all other categories (123,4,M40,5) at 0730 Sharp (no exceptions)**

Category	Entry Fee for Omnium	Entry Fee per Event
1,2,3	\$55	\$30
4	\$55	\$30
M40+ (Cat 1-5)	\$55	\$30
Women's	\$55	\$30
5	\$55	\$30
Juniors	\$10	\$5

**\*\*One day license – if you do not have a road racing license, you can purchase a one day license online or at the race (\$10). You need to purchase 2 one day licenses and fill out two forms if you are racing Saturday and Sunday. Cat 1-4 must have a license.**

**\*\*CAT 5 has a 50 rider field limit for the criterium and road race\*\***

**\*\*Non licensed riders must add \$10 for each day of racing\*\***

**\*Annual memberships will be available for purchase to non-licensed riders \$70\***

**\*\*Riders with one day licenses will NOT be eligible for LCCS points\*\***

**\*\*Make all checks Payable to CC Racing, Inc.\*\***

# \*Event Schedule\*

**\*\*Quick look at categories, start times, and distances\*\***

**\*Saturday Afternoon - Roy Landry Criterium – Lafayette, LA at the Hampton Inn\***  
**1st Event – Criterium - Saturday – March 25<sup>th</sup>, 2017.**



Category	Start Time	Duration (minutes)
Juniors	1:00 PM	30
Women	1:45 PM	40
5	2:45 PM	40
M40+(1-5)	3:45 PM	45
4	4:45 PM	45
1-2-3	5:45 PM	60



**(1910 South College Road / Lafayette, LA 70508)**

**\*Sunday Morning – Eliel Cycling Road Race – Arnaudville, LA\***

**2nd Event – Road Race – March 26<sup>th</sup>, 2017.**



Category	Start Time	Distance (miles)	Laps
1-2-3	08:00 AM	71	5
4	08:10 AM	58	4
M40+(1-5)	08:20 AM	58	4
5	08:25 AM	45	3
Women	<b>07:00 AM</b>	32	2
Juniors	<b>07:10 AM</b>	20	1



**(1500 Courtableau St. Arnaudville, LA 70512)**

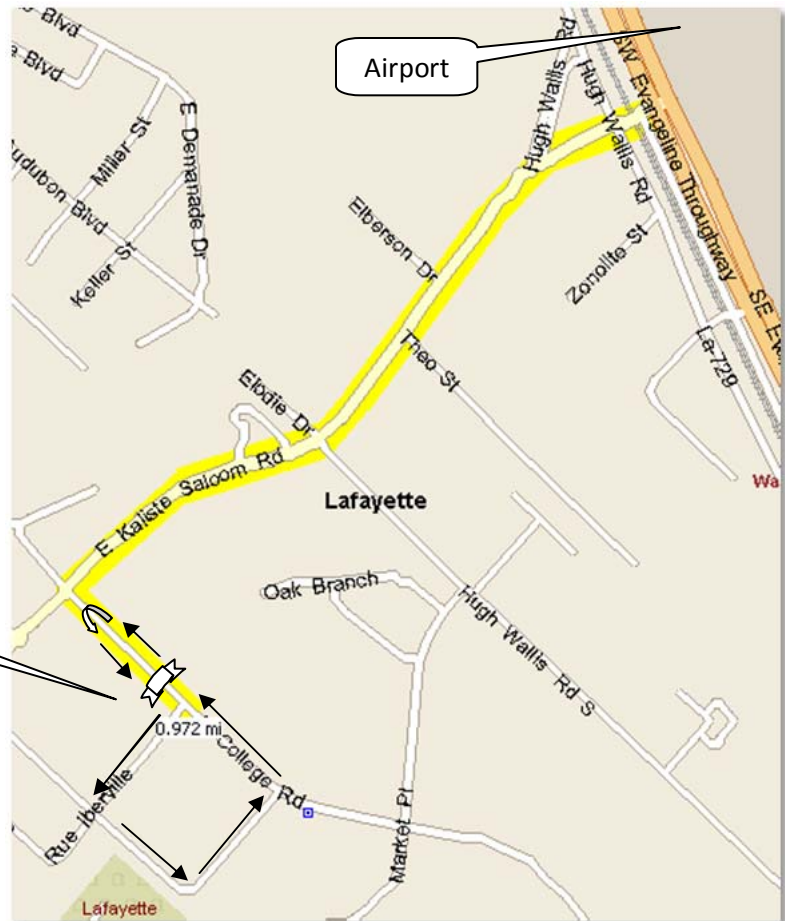


**\*Roy Landry Criterium Details - (1st Event) Lafayette, LA - Saturday Afternoon\***

**\*REGISTRATION WILL CLOSE 30 MINUTES PRIOR TO YOUR RACE FOR SINGLE EVENT ENTRANTS\***

**Directions:**\*Directions–From Hwy 90 across from the Acadiana Regional Airport, head south west on to Kaliste Saloom Road. Travel .82 miles and take a left on to south college road and you should see the start finish line of the criterium. ([map](#))

**CRITERIUM COURSE:** The .84 mile course will be ridden counter clockwise. The course consists of 1 large U-turn, 1 right hand turn into a 20 feet incline, and 3 left hand turns going back downhill.



Hampton Inn

Category	Start Time	Duration (mins)
Juniors	01:00 PM	30
Women	01:45 PM	40
5	02:45 PM	40
M40+	03:45 PM	45
4	04:45 PM	45
1-2-3	05:45 PM	60

**CRITERIUM RULES:**

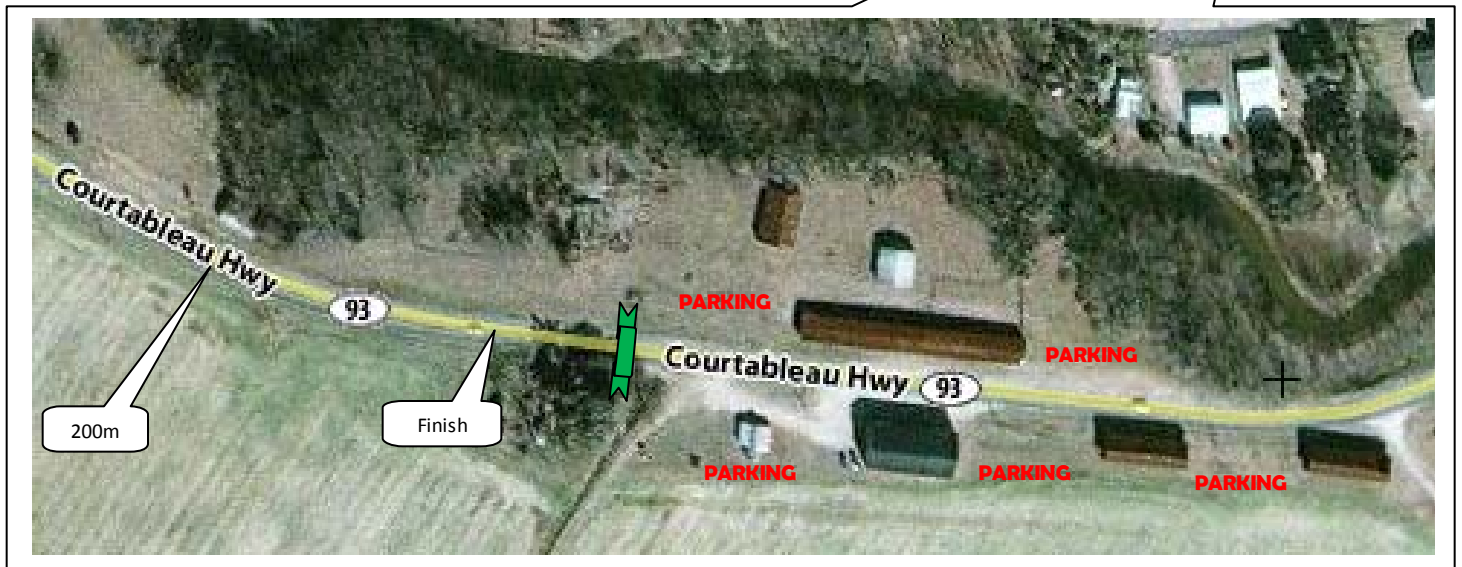
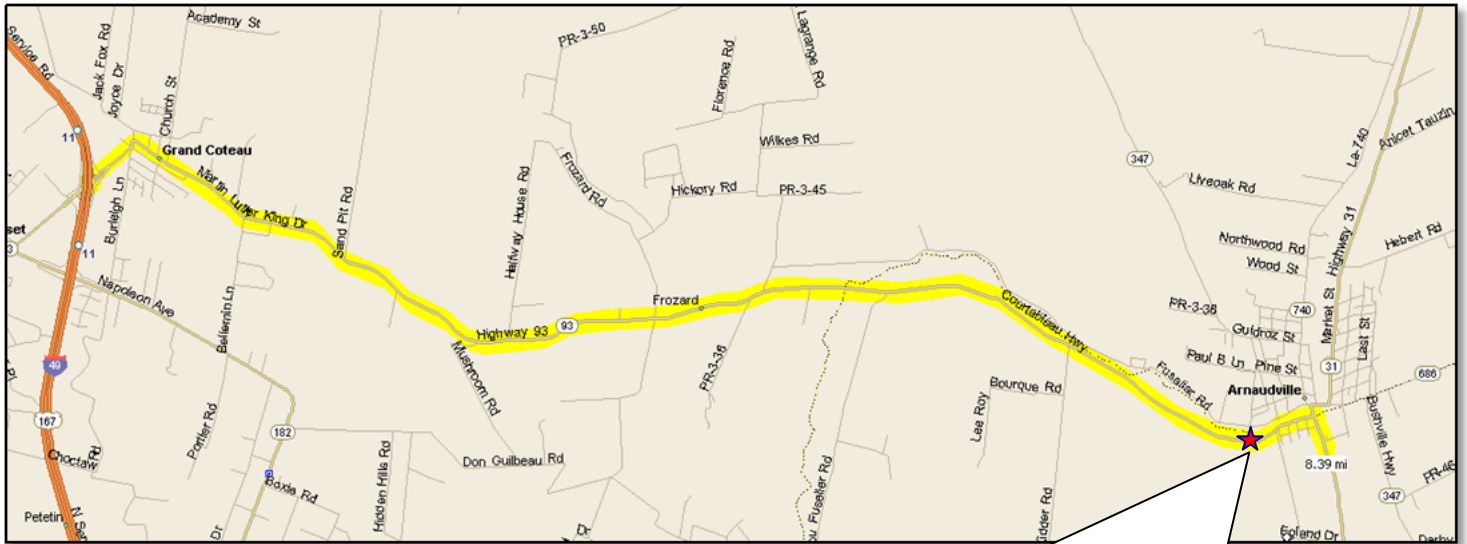
- Riders are not permitted to warm up on the course until all riders from the previous race have finished and / or announced by the chief referee.
- The free lap rule will be in effect. You must report to the pit in order to receive a free lap. The pit will be located in the area of the start line. Free laps are allowed only for mishaps as per USCF regulations. Riders suffering from a mishap may not ride against the traffic in order to get to the pit area. Proceed in the direction of the race only. **NO FREE LAPS WILL BE GRANTED DURING THE FINAL SIX LAPS of the race.**
- All riders finish on the same lap as the leader. Lapped riders may be pulled if they threaten to interfere with the finish or the safety of the race.
- Lapped riders may not compete for primes, bonus points, or for the finish. Lapped riders may not contest the final sprint. Lapped riders may not drop back in order to assist another rider off the front of the pack.

**\*Elie! Cycling Road Race Details (2nd Event) Arnaudville, LA-Sunday Morning\***

**\*REGISTRATION WILL CLOSE FOR WOMEN AND JUNIORS AT 06:30 AM; DON'T BE LATE\***

**\*REGISTRATION WILL CLOSE FOR Cat4, 5, M40, and 123 AT 07:30 AM; DON'T BE LATE\***

\*Directions—From I-49; Take the Grand Coteau Exit 11 and head east on Hwy 93 for approximately 8 miles. You will see two wooden buildings on the left and right side as you enter Arnaudville. Park on the right side behind the buildings! ([1517 Courtableau Hwy / Arnaudville, LA 70512](http://1517CourtableauHwy/Arnaudville,LA70512)) Please adhere to parking attendants instructions; space is limited – so park efficiently. If low / muddy areas are encountered, please try to avoid these areas if at all possible. Tread lightly!!!!



## \*Sunday Morning Road Race Details Continued\*

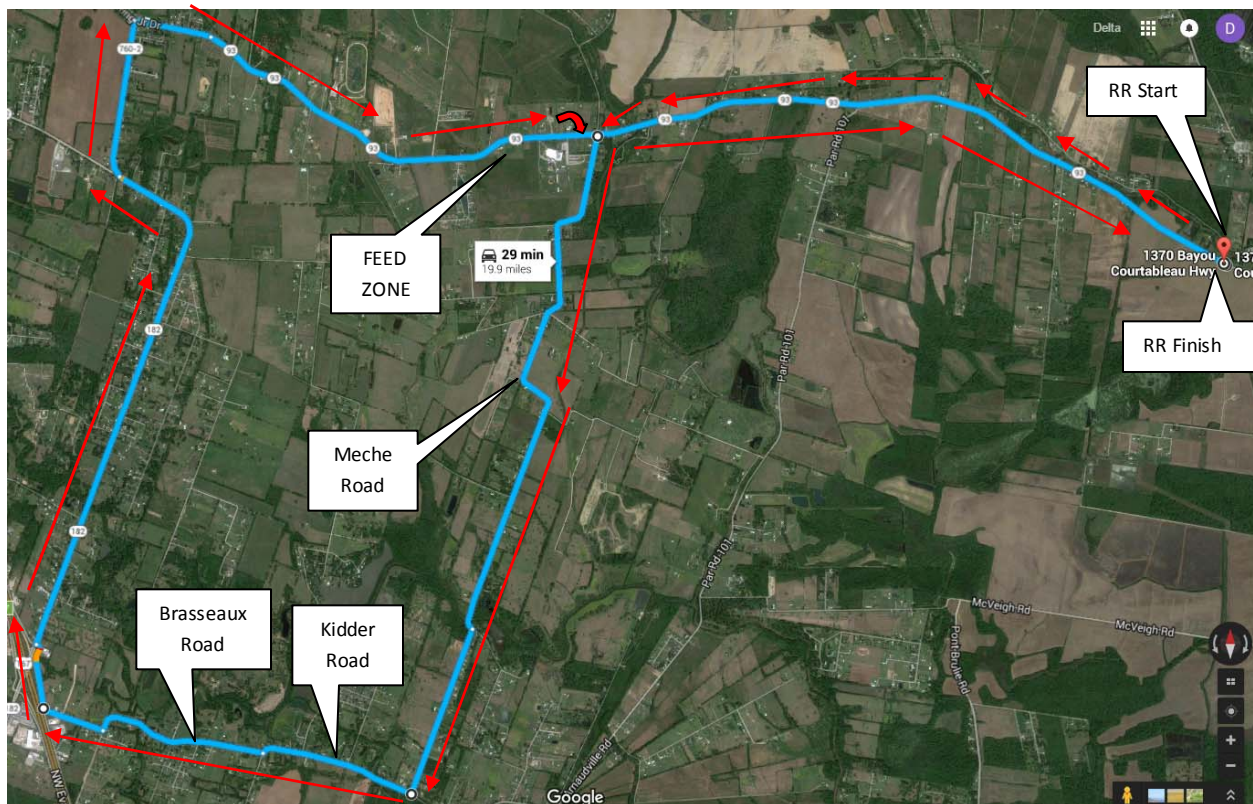
**RR Course Description:** The road race will start at the staging area and the finish line will be at the same spot. The circuit is 15 miles in length and will be raced clockwise.

**Rules-** All USCF rules will be enforced at all times. Riders in different races may not work together. Please confirm your placing after the RR with the official. The centerline rule will be in effect during the RR & TT.

**Feeding:** Feeding will be allowed 2.5 miles up the road – see the map. This zone will be marked. Please DO NOT discard trash along the race course; only do so in the feed zone. Support vehicles will be on the lookout for litterbugs! Riders caught littering the roadside **WILL** result in disqualification. The race organizer will neutral water feeds but limited volunteers to hand them out; Riders should carry their own bottles, or have them provided by support personnel.

**TRAFFIC CONTROL:** The Road Race course will be OPEN TO TRAFFIC. \*MOST IMPORTANTLY\* I know we like to take turns wide, but please try to stay in the right lane at all times. Please remember that most drivers do not know how to react to a racing peloton. The center line rule will be in effect. All turns should be monitored, but the final responsibility for safety rests with the rider! We sometimes have trouble stopping cars. KEEP YOUR HEADS UP THROUGH THE TURNS! When warming up before races, KEEP THE ROAD CLEAR by not standing around in the street talking, etc. this is very important for our ability to continue to have races on our course. Try at all times to avoid blocking the road. Please respect the rights of others with whom we share the road. Team and individual vehicles are to stay in the parking area at all times. Both lanes can be used once within the 200 meter mark for the final sprint. Keep your heads up!

**Support Vehicle** – There will be a single following pickup with neutral, rider-provided, wheel support. Following vehicles will be located near the start line. Spare wheels must be labeled. Don't forget to pick up your wheels after the race. If you used someone else's wheel, please return it immediately to the support vehicle after the race.





**\*Payout Schedule for the Overall Omnium\***

- The above prize list is based upon a minimum of riders per category (see chart).
- Categories not meeting the minimum entries, may be combined with another race and / or have their prize list adjusted.
- The prize list will be distributed based on the riders Final Individual General Classification for the Overall Payout as well as placement within individual events.

Category	Racers needed to meet payout
1-2	15
3	10
4	15
M-40+(1-4)	15
Women	12

Category	Prime
1-2-3	\$500
3	n/a
4	\$175
M40+(1-4)	\$175
5	n/a
Women	\$100
Juniors	\$50

<b>OVERALL Classification</b>		
Cat 1,2,3	1st	\$250
	2nd	\$200
	3rd	\$175
	4th	\$100
	5th	\$75
	6th	\$40
	7th	\$30
	8th	\$20
	9th	\$20
	10th	\$10
\$920		
Cat 3 BONUS overall only	1st	\$100
	2nd	\$80
	3rd	\$60
	4th	\$40
	5th	\$20
\$300		
Cat 4	1st	\$100
	2nd	\$85
	3rd	\$65
	4th	\$50
	5th	\$40
	6th	\$30
	7th	\$20
	8th	\$20
	9th	\$10
	10th	\$10
\$430		
M 40+	1st	\$100
	2nd	\$85
	3rd	\$65
	4th	\$50
	5th	\$40
	6th	\$30
	7th	\$20
	8th	\$20
	9th	\$10
	10th	\$10
\$430		
Cat 5	1st	Medals
	2nd	Medals
	3rd	Medals
Women	1st	\$100
	2nd	\$85
	3rd	\$65
	4th	\$45
	5th	\$35
	6th	\$25
	7th	\$20
	8th	\$10
	9th	
	10th	
\$385		
Junior's	1st	Medals
	2nd	Medals
	3rd	Medals

## \*HOT SPOTS for Criterium\*

There will be a single HOT SPOT for each race on Saturday Afternoon. The Criterium Race HOT SPOT will be at the approximate midpoint of the race. Bonuses will be awarded for First, Second, and Third Place in all categories.

1<sup>st</sup> Place = 3 points

2<sup>nd</sup> Place = 2 points

3<sup>rd</sup> Place = 1 point



## \*Points List for Omnium\*

RR / Criterium	
Place Finished	Points
1 <sup>st</sup>	25
2 <sup>nd</sup>	20
3 <sup>rd</sup>	16
4 <sup>th</sup>	14
5 <sup>th</sup>	12
6 <sup>th</sup>	10
7 <sup>th</sup>	9
8 <sup>th</sup>	8
9 <sup>th</sup>	7
10 <sup>th</sup>	6
11 <sup>th</sup>	5
12 <sup>th</sup>	4
13 <sup>th</sup>	3
14 <sup>th</sup>	2
15 <sup>th</sup>	1

- **Final Standings will be determined by total points earned.**
- **Ties will be broken by the finishing order of the most recent stage.**

Special Thanks to:

[T.R.A.I.L](#)

R&J BOP Rubbers

Eliel Cycling



*Thank you so much for supporting our event!*